

ASSEMBLY INSTRUCTIONS SYSTEM 3 EZ

Congratulations on your decision to use the world's most advanced and user-friendly cyclorama system. We have taken a great deal of care to create and ship your cyc, so please take a minute to visually inspect the crate before you sign the receipt to accept the shipment. Are there any signs of damage, including puncture holes in the crate, or shattered or stressed wood?

If there is visible damage, insist that the damage be noted on your bill of lading and that either the delivery person or a representative from the delivery company be present when you open the crate. All Pro Cyc crates are custom made for each order. Pro Cyc will not honor claims for damage if the bill of lading has been signed without noting and alerting the carrier of damage to the crate. The only exception is if the damage is internal. In that case, keep the crate so it can be inspected.

Review your Pro Cyc shipment to make sure all items listed on your quote match up to the items shipped. If there is a discrepancy, please call us right away to get the problem resolved.

Let's Assemble Your Cyc:

1. Tools

You will need the following tools & supplies for assembly of the cyc:

- Circular saw
- Stud finder
- Sockets and drivers; 7/16"
- Clamps or vise grips
- Chalk line
- 24" long level
- Carpenter's square
- 1/8" drill bit and drill motor
- Roto-hammer with 5/32" masonry drill bits (only if

attaching cyc to concrete wall or floor)

- Counter sink
- Canned air
- Liquid Nails construction adhesive (One ten-ounce tube for every 16 linear feet of cyc floor length)
- Dry mortar mix (One 80-pound bag for every 12 linear feet of cyc floor length)
- 3M Super 77 spray adhesive (One can for every 60 linear feet of cove-to-cove, cove-to-wall or cove-to-floor joint length)
- Framing hammer
- Screwdriver (Phillips & flat)
- Palm sander w/60-grit and 30-grit sandpaper
- Clean shop towels or cloths
- 4" minimum width horizontal furring strips or plywood – enough to match up to total length of floor cove cyc-to-wall contact area
- Vertical furring strips or plywood - same width as the distance on center between studs in your wall. The height of these strips needs to be 39 1/2 inches less than the overall height of your finished cyc. You should have two furring strips or pieces of plywood this size for every corner in your cyc. (L-shaped cycs have one corner; U-shaped cycs have two corners.)
- All furring strips or plywood should be the same thickness as the sheetrock in your wall
- Sheetrock knife
- Drywall tools
- Primer

- Paint
- Paint supplies
- ABS plastic glue or cement (Available in plumbing supply stores. This adhesive is only required if you need to trim your cyc to fit your studio.)

2. Sanding the Modules

Sand the entire surface of each cyc module with 60-grit sandpaper. This will provide for better paint adhesion.

Sand the outside edges and the side flanges with 30-grit sand paper. This will provide for better joint compound adhesion and help create a non-slip surface when bolting the modules together.

Sanding before assembly will help make sure outside edges coming in contact with the joint compound are not missed.

After sanding, clean each module with a damp cloth. Dust from the sanding process can interfere with paint and joint compound adhesion. This is also a good time to clean the sanding dust from your studio.

3. Framing

For cycs with corner pieces, begin in the corner of the wall where you will remove two strips of sheetrock and replace them with furring strips or plywood so you have a solid surface to which you attach your Pro Cyc corner modules. The first step is to slide your bottom Pro Cyc corner section into the corner. Next, use a pencil and trace around the two vertical edges of the corner module. This will be approximately 37 1/2 inches from the corner. Pull the corner away from the walls, so you have room to work. Next, using a stud finder, locate the studs in your existing wall. From the lines marking the vertical edges of your

corner section, locate the closest stud inside each line and outside each line. Remove the sheetrock between the two studs on the left and the two studs on the right. Begin this process by cutting the sheetrock with a knife or circular saw 39 ½ inches above the floor and up to the planned height of the top vertical module. (BE CAREFUL NOT TO CUT COMPLETELY THROUGH THE SHEETROCK WITH A CIRCULAR SAW. IF THE STUDS ARE METAL THE DAMAGE CAN BE STRUCTURAL. COMPLETE THE CUT WITH A SHEETROCK KNIFE.) Make the cuts through the sheetrock, along the center of each stud. Remove the sheetrock between the studs and replace it with plywood or furring strips that are the same thickness as the sheetrock you removed.

Now you need to remove horizontal strips of sheetrock along the top of the floor coves' length and width of your cyc and replace them with plywood or furring strips so you have a solid surface to which you attach the top of your floor-cove modules.

Begin in the corner and measure out at least as long and wide as your cyc. Terminate each strip into the stud that is equal to or longer/wider than your cove unit. Each strip should go underneath the furred out vertical strips you have in place. Measure up from the floor 35 ½ inches and mark the wall at either end of your cyc. Next, mark the wall 4 inches above your first mark. Use a chalk line to mark the area to be removed. Using a sheetrock knife or a circular saw, remove the sheetrock between your two lines and replace it with plywood or furring strips that are the same thickness as the sheetrock wall. (AGAIN, BE CAREFUL NOT TO CUT COMPLETELY THROUGH THE SHEETROCK WITH A CIRCULAR SAW. IF THE STUDS

ARE METAL THE DAMAGE CAN BE STRUCTURAL. COMPLETE THE CUT WITH A SHEETROCK KNIFE.)

NOTE: Adding an additional layer of sheetrock (on top of your existing sheetrock with furring strips) will help with soundproofing and it will also render an improved fire rating. If you choose to install a second layer of sheetrock make sure to use wood screws that are long enough to reach the furring strips when you attach the Pro Cyc modules to the wall.

4. Trimming Your Cyc to Fit Your Studio (See Figure L)

Snap a chalk line at the desired length and use a circular saw to cut the module to the size.

Next, cut the remaining part one inch from the flanged end so you can re-attach the flange. Clean off any burrs or debris from the plastic before using ABS adhesive or cement (available in plumbing supply stores) to fasten the flanged end behind (under) the cut-to-length module. Clamp the parts together until the glue is dry.

You will need to trim the floor and/or wall side of the flange back to the point where it will allow you to align the face of the trimmed module with the face of the adjoining module.

5. Assembly

With your plywood or furring strips in place, begin to assemble your Pro Cyc modules. Before assembly, make sure that the flanges on the modules do not prevent the cyc from fitting flush to the floor or wall. If a flange holds a cove end off the floor or wall, simply grind down the flange in that area. Assemble your cyc away from the walls so you have adequate space to work.

To attach the horizontal floor-cove modules to the corner module,

install ¼"-20 x 1" bolts, nuts and washers in the predrilled holes on the flanges of the parts. Before final tightening use the straight edge again to make sure the modules are flush on the face. Repeat this procedure for each cove module. Follow the same steps to assemble the vertical cove modules.

6. Attach the Cyc to the Wall

After all of the cyc modules have been attached to one another – and you have checked to make sure the modules are all flush on the face – push the cyc unit into place in the corner and along the wall. When the entire unit is against the wall, continue to shift the cyc back and forth until all areas seem to be against the wall and floor.

Begin by attaching the corner module to the wall. Use a 1/8-inch drill bit to drill through the holes in the module and into your plywood or furring strip. Starting in the corner, work your way up and out from the corner and attach the cyc to the wall with #10 x 1" flat head Phillips wood screws and Liquid Nails construction adhesive. Make sure the modules remain parallel to the furring strips or plywood and that the cyc does not "climb" or "sag" as you move away from the corner and proceed to the ends of the cove unit.

7. Fastening the Bottom Edge to the Floor

After the top and sides of the corner modules and the top of your floor coves have been attached, it is time to position and fasten the bottom of your cyc to the floor. Using both hands, grab the cyc from underneath, pull it forward, and then let it fall gently into place.

To secure the cyc to the floor, begin in the corner and work toward each end of the cyc.

Drill through the cove modules into the floor. If you are attaching to concrete, you should use a roto-hammer and 5/32" carbide masonry drill bits to install 3/16" x 1-1/4" flat-head Phillips concrete screws. Drill the holes a minimum of 1-1/2" deep. If you are fastening into a wood floor, you should use 1/8" drill bits to install #10 x 1" flat-head Phillips wood screws.

Before installing the screws blow out each hole with canned or compressed air. Pro Cyc recommends using multipurpose construction mastic, such as Liquid Nails, between the cove module and the floor when fastening.

8. Finish the Joints and the Tapered Edge at the Floor

The tapered edge at the floor may be done either simultaneously with the joint mudding or subsequent to the joints. The completed feathered edge at the cyc-to-studio floor transition will typically extend 4" to 6" in front of the front edge of the cyc modules. This feathered edge completes the radius of the cove module.

The process for finishing the joints and the tapered edge at the floor is the same:

Make sure that the surfaces of all modules are properly sanded (see Step 3.) and wiped down in order to remove sanding dust. Use a self-adhesive fiberglass mesh tape on the joints. Be sure to press the tape into the crack with your finger as you apply the tape. Lightly spray/mist the recessed joint areas with 3M Super 77 spray adhesive. Allow the spray adhesive to dry for one hour. This

spray adhesive acts as an adhesion promoter for the drywall mud. Use a 90-minute drywall mud such as Durabond 90 Setting Type Joint Compound to mud the joints.

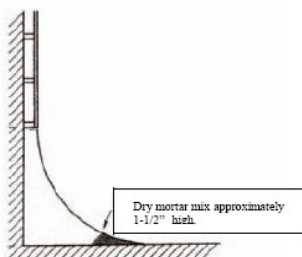
DO NOT USE EASY SAND JOINT COMPOUNDS, AS THEY HAVE POOR TACKING QUALITIES.

ALLOW PLENTY OF TIME FOR THE MUD TO COMPLETELY DRY BEFORE APPLYING SUBSEQUENT COATS. This is because moisture can only escape through the face of the joint.

Wet sand or dry sand the joints and re-coat with the 90-minute mud. Wet or dry sand again. For the third and final coat, use a regular box or bucket mud, such as Beadex All Purpose Joint compound, to float out the seams. Sand and wipe down the cyc one last time before painting.

9. Reinforce the Tapered Edge at the Floor

To provide additional support to the cyc, put dry mortar mix underneath the area where the cyc meets the floor. Do this to a height of approximately 1-1/2" as depicted in the drawing below. Use a spray bottle to spray water on the back side of the mortar mix and allow mortar to set.



10. Prime & Paint the Cyclorama

Wipe the entire cyc with a clean damp cloth – including the sheetrock wall. It is now ready to be primed. Use two heavy coats of high-quality stain-blocking primer, such as Kilz® Premium Acrylic Primer. The primer may be either oil or latex based and should be flat, not glossy.

Use either a roller or an airless spray gun. If you are using a roller, use a 3" roller in the corner area. This will help prevent lines and streaks caused by larger rollers. The nap of your rollers should be 5/8" to 3/4". When you are satisfied that no shadows appear through the paint at the joints, apply the final coat(s) of paint. The final coats should be interior flat latex paint.

Repaint as often as necessary over the life of the cyc. Clean between each coat. Wearing surgical booties and/or putting plastic on the floor coves during rehearsal or studio prep will prolong the time between new coats of paint.

11. Questions?

Please give us a call at: (503) 723-7448. You can also email us at: info@procy.com

Instructions, videos, schematics, helpful construction hints and other recommendations can be found on our website: www.procy.com

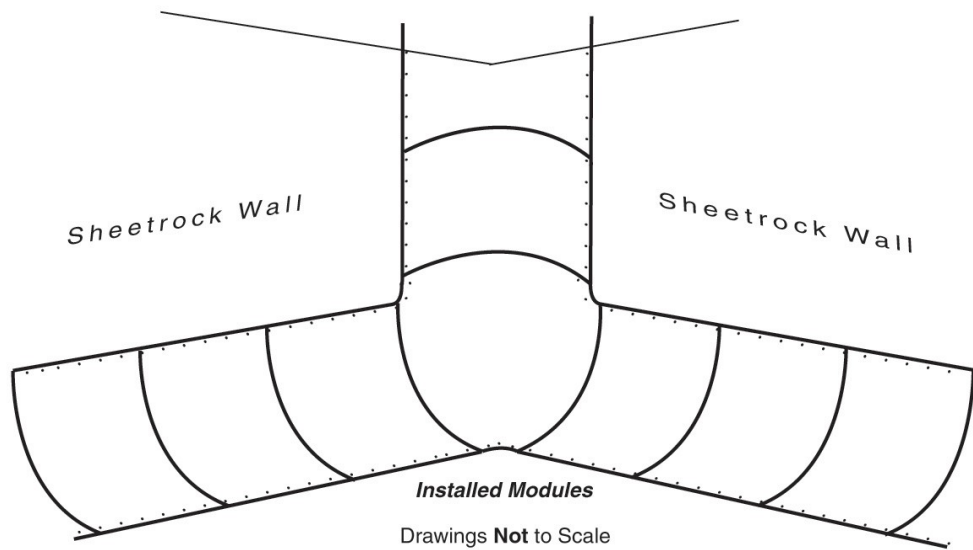
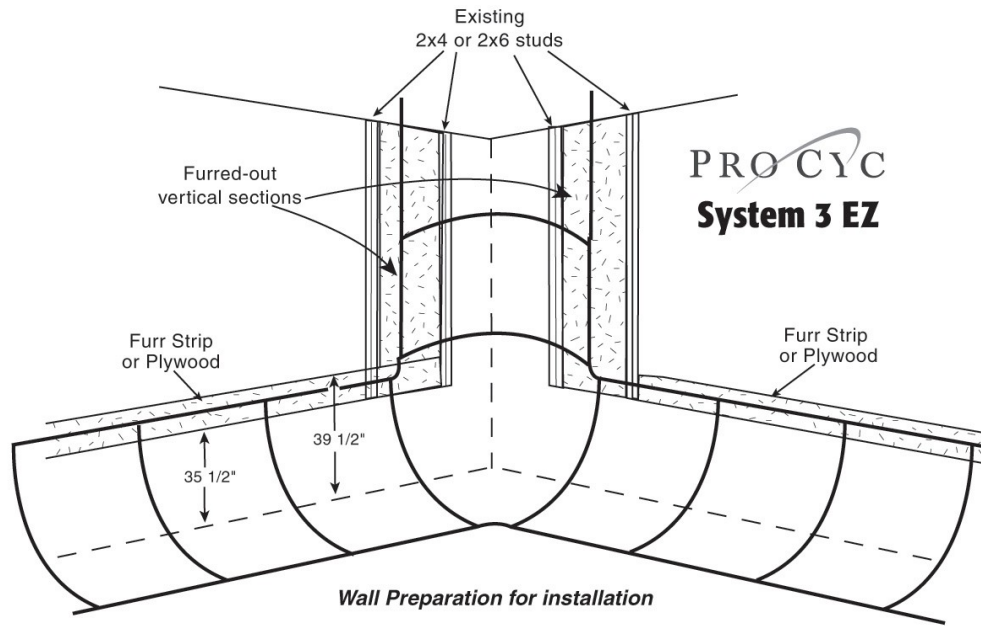


Figure L

